

MITSUBISHI

Lift Trucks

FG20
FG25
FG30
FG35A



 **MITSUBISHI**
FORKLIFT TRUCKS

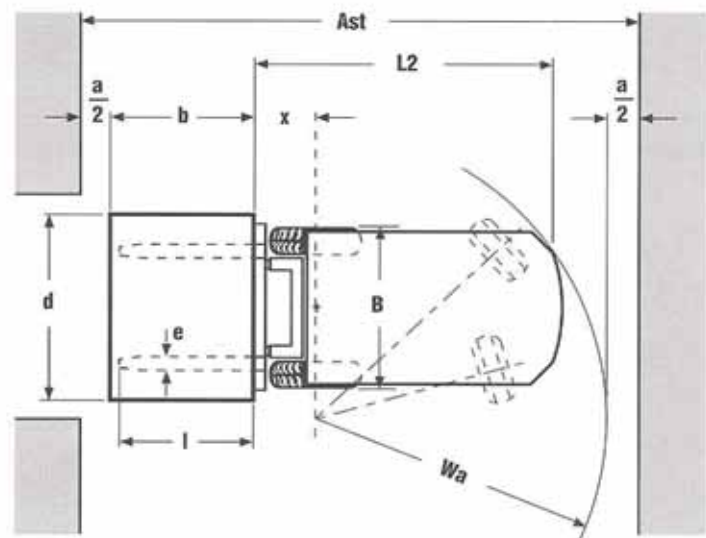
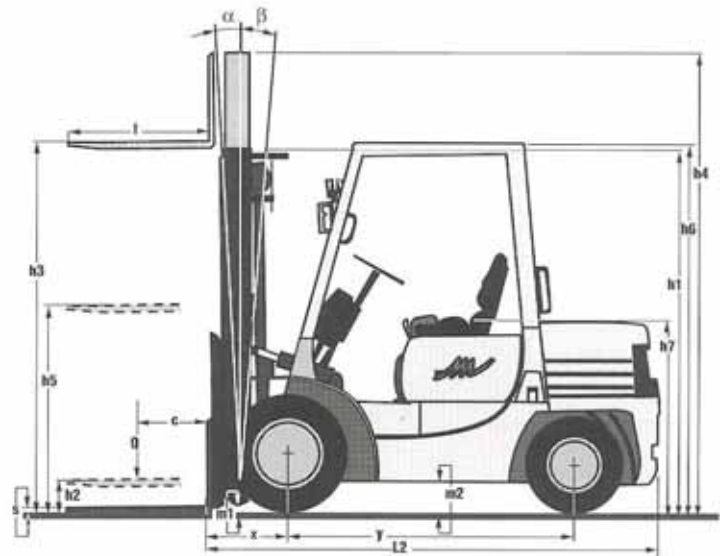


| Kenmerken | | | | | | |
|----------------------------|-----------------------|--|----------------------------------|------------------|--------------------|--------------------|
| 1 | fabrikant | naam | | | Mitsubishi | Mitsubishi |
| 2 | model | type aanduiding | | | FG20 | FG25 |
| • 3 | hefkapaciteit | Q | nominaal vermogen | t | 2.0 | 2.5 |
| • 4 | lastzwaartepunt | c | afstand | mm | 500 | 500 |
| 5 | aandrijving | elektrisch, diesel, benzine, LPG | | | Benzine / LPG | Benzine / LPG |
| 6 | besturing | meelopende, staande, zittende | | | Zittende | Zittende |
| • 7 | banden | V=volrubber, L=lucht, SE=cushion voor/achter | | | SE / SE | SE / SE |
| • 8 | wielen(X=aangedreven) | aantal: voor/achter | | | 2x / 2 | 2x / 2 |
| Afmetingen | | | | | | |
| • 9 | hefhoogte | h3 | max. vorkhoogte | mm | 3300 | 3300 |
| • 10 | met std 2-traps mast | h2 | vrije heffing | mm | 140 | 140 |
| • 11 | | h5 | extra vrije heffing | mm | 1215 | 1215 |
| 12 | vorkenbord | din 15 173 A/B/nce | | | 2 A | 2 A |
| • 13 | vorken | s,e,l | lengte x breedte x dikte | mm | 40, 125, 1070 | 40, 125, 1070 |
| • 14 | mastneiging | α/β | voorover/achterover | graden | 6 / 10 | 6 / 10 |
| • 15 | afmetingen | L2 | lengte tot voorkant vorken | mm | 2445 | 2515 |
| • 16 | | B1 | breedte met std banden | mm | 1150 | 1150 |
| • 17 | | h1 | hoogte met ingeschoven mast | mm | 2210 | 2210 |
| • 18 | | h4 | hoogte met uitgeschoven mast | mm | 4330 | 4330 |
| • 19 | | h6 | hoogte tot bovenkant beschermrek | mm | 2070 | 2070 |
| • 20 | | h7 | zithoogte | mm | 1030 | 1030 |
| • 21 | | draaistraal | Wa | | mm | 2170 |
| • 22 | lastafstand | X | vanaf hart vooras | mm | 450 | 450 |
| • 23 | 90 gr.stapelring | Ast | voor pallets 800x1200/1000x1200 | mm | 3620 / 3820 | 3685 / 3885 |
| Uitvoering | | | | | | |
| 24 | snelheden | rijnsnelheid beladen/onbeladen | | km/u | 16.5 / 18.0 | 16.0 / 18.0 |
| 25 | | hef snelheid beladen/onbeladen | | m/s | 0.51 / 0.61 | 0.51 / 0.61 |
| 26 | | daalsnelheid beladen/onbeladen | | m/s | 0.50 / 0.50 | 0.50 / 0.50 |
| • 27 | trekkracht a/d haak | beladen/onbeladen (1 uur) | | N | 13630 / 8920 | 13530 / 8430 |
| • 28 | maximum trekkracht | beladen/onbeladen (5 min.) | | N | | |
| • 29 | helling | beladen/onbeladen | | % | 28 / 25 | 23 / 21 |
| • 30 | maximum helling | beladen/onbeladen | | % | | |
| • 31 | acceleratie | beladen/onbeladen | | sec | | |
| Gewicht | | | | | | |
| • 32 | gewicht onbeladen | inclusief batterij | | kg | 3340 | 3730 |
| • 33 | asbelasting | beladen voor/achter | | kg | 4730 / 610 | 5480 / 750 |
| 34 | | onbeladen voor/achter | | kg | 1520 / 1820 | 1450 / 2280 |
| Chassis | | | | | | |
| 35 | banden | aantal voor/achter | | | 2 / 2 | 2 / 2 |
| 36 | | afmetingen | voor | mm | 7.00-12 | 7.00-12 |
| 37 | | | achter | mm | 6.00-9 | 6.00-9 |
| • 38 | wielbasis | y | | mm | 1600 | 1600 |
| 39 | spoorbreedte | hart op hart banden voor/achter | | mm | 960 / 980 | 960 / 980 |
| 40 | bodenvrijheid | m1 | beladen op 't laagste punt | mm | 130 | 130 |
| 41 | | m2 | midden wielbasis | mm | 160 | 160 |
| 42 | voetrem | mechanisch/hydraulisch/elektrisch/pneumatisch | | | Voet / Hydraulisch | Voet / Hydraulisch |
| 43 | parkeerrem | voet/hand/dodemensuitvoering | | | Hand / Mechanisch | Hand / Mechanisch |
| Aandrijving en Transmissie | | | | | | |
| 44 | batterij | DIN 43535/36A/B/C/no | | | | |
| • 45 | | max.beschikbaar vermogen bij 5-urige ontlading | | V/Ah | | |
| • 46 | | gewicht | | kg | | |
| 47 | elektromotoren | rijmotor vermogen | | kW | | |
| 48 | | pompmotor verm.(15% werkcyclus) | | kW | | |
| 49 | verbrandingsmotor | merk/type | | | Mitsubishi / 4G63 | Mitsubishi / 4G63 |
| 50 | | kontinu vermogen | | kW | 31 | 31 |
| 51 | | bij TPM | | rpm | 2400 | 2400 |
| 52 | | aantal cilinders/cilinderinhoud | | cm ³ | 4 / 1997 | 4 / 1997 |
| • 53 | brandstofverbruik | | l/u | — | — | |
| 54 | rijregeling | elektrische trucks | | type/aant.versn. | Powershift / 1 | |
| 55 | transmissie | verbranding trucks | | type/aant.versn. | — | Powershift / 1 |
| 56 | overbrenging | verbranding trucks | | type | 180 | — |
| 57 | werkdruk | voor hulpstukken | | bar | — | 180 |
| 58 | geluidsniveau | op oorhoogte chauffeur | | dB(A) | — | — |

Ligne 16: Breedte met dubbele banden: = FG20, FG25 = 1640 mm; FG30, FG35A = 1690 mm

FG20 • FG25 • FG30 • FG35A 2.0t • 2.5t • 3.0t • 3.5t

| | | |
|------|--------------------|--------------------|
| 1 | Mitsubishi | Mitsubishi |
| 2 | FG30 | FG35A |
| • 3 | 3.0 | 3.5 |
| • 4 | 500 | 500 |
| 5 | Benzine / LPG | Benzine / LPG |
| 6 | Zittende | Zittende |
| • 7 | SE / SE | SE / SE |
| • 8 | 2x / 2 | 2x / 2 |
| • 9 | 3300 | 3300 |
| • 10 | 150 | 150 |
| • 11 | 1125 | 1235 |
| 12 | 3 A | 3 A |
| • 13 | 50, 125, 1070 | 50, 125, 1070 |
| • 14 | 6 / 10 | 6 / 10 |
| • 15 | 2705 | 2760 |
| • 16 | 1275 | 1290 |
| • 17 | 2210 | 2320 |
| • 18 | 4435 | 4435 |
| • 19 | 2095 | 2105 |
| • 20 | 1055 | 1065 |
| • 21 | 2440 | 2495 |
| • 22 | 485 | 485 |
| • 23 | 3925 / 4125 | 3980 / 4180 |
| 24 | 17.0 / 19.0 | 17.0 / 19.0 |
| 25 | 0.47 / 0.52 | 0.40 / 0.43 |
| 26 | 0.50 / 0.50 | 0.50 / 0.50 |
| • 27 | 15690 / 10690 | 15100 / 10200 |
| • 28 | | |
| • 29 | 23 / 23 | 19 / 19 |
| • 30 | | |
| • 31 | | |
| • 32 | 4360 | 4740 |
| • 33 | 6570 / 790 | 7370 / 870 |
| 34 | 1820 / 2540 | 1850 / 2890 |
| 35 | 2 / 2 | 2 / 2 |
| 36 | 28x9-15 | 250-15 |
| 37 | 6.50-10 | 6.50-10 |
| • 38 | 1750 | 1750 |
| 39 | 1060 / 980 | 1060 / 980 |
| 40 | 130 | 140 |
| 41 | 190 | 200 |
| 42 | Voet / Hydraulisch | Voet / Hydraulisch |
| 43 | Hand / Mechanisch | Hand / Mechanisch |
| 44 | | |
| • 45 | | |
| • 46 | | |
| 47 | | |
| 48 | | |
| 49 | Mitsubishi / 4G64 | Mitsubishi / 4G64 |
| 50 | 37 | 37 |
| 51 | 2400 | 2400 |
| 52 | 4 / 2350 | 4 / 2350 |
| • 53 | — | — |
| 54 | | |
| 55 | Powershift / 1 | Powershift / 1 |
| 56 | — | — |
| 57 | 180 | 180 |
| 58 | — | — |



$$Ast = Wa + x + b + a$$

- Ast = 90 graden stapeling
- a = veiligheidsmarge = 200 mm
- b = breedte pallet (800 - 1000mm)
- d = lengte pallet (1200 mm)

Groeiende bedrijven vertrouwen op Mitsubishi heftrucks.



Mast opties en capaciteiten

| Mast Type | FG20 • FG25 | | | | FG20 | FG25 |
|------------------------------------|-------------|-----------------|----------|----------|----------------------|----------------------|
| | h3 mm | h2/ h5 mm | h1 mm | h4 mm | Q @ c=500mm kg | Q @ c=500mm kg |
| Simplex (Standaard) | 3000 | 140 | 2060 | 4030 | 2000 | 2500 |
| | 3300 | 140 | 2210 | 4330 | 2000 | 2500 |
| | 3700 | 140 | 2410 | 4730 | 2000 | 2500 |
| | 4000 | 140 | 2590 | 5030 | 2000 | 2500 |
| | 4500 | 140 | 2840 | 5530 | 1900 | 2400 |
| | 5000 | 140 | 3090 | 6030 | 1850* | 2300 |
| Duplex (extra vrije heffing) | 3000 | 1045 | 2030 | 4030 | 2000 | 2500 |
| | 3300 | 1215 | 2200 | 4330 | 2000 | 2500 |
| | 3700 | 1410 | 2400 | 4740 | 2000 | 2500 |
| | 4000 | 1595 | 2580 | 5030 | 2000 | 2500 |
| Triplex | 3700 | 860 | 1845 | 4760 | 2000 | 2500 |
| | 4000 | 960 | 1945 | 5060 | 2000 | 2500 |
| | 4330 | 1060 | 2045 | 5360 | 1950 | 2450* |
| | 4780 | 1210 | 2195 | 5810 | 1850* | 2350* |
| | 5000 | 1310 | 2295 | 6060 | 1800* | 2300* |
| | 5500 | 1460 | 2445 | 6560 | 1750* | 2200* |
| 6000 | 1630 | 2615 | 7030 | 1650* | 2100* | |

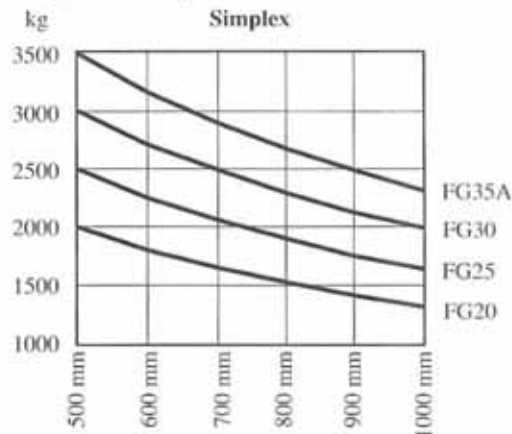
- h3 max. vorkhoogte
- h1 hoogte met ingeschoven mast
- h4 hoogte met uitgeschoven mast
- h2 standaard vrije heffing
- h5 extra vrije heffing
- Q capaciteit
- c lastzwaartepunt

| Mast Type | FG30 • FG35 | | | | | FG30 | | | | FG35A | | | |
|------------------------------------|-------------|-----------------|----------|----------|----------------------|-----------------|----------|----------|----------------------|-----------------|----------|----------|----------------------|
| | h3 mm | h2/ h5 mm | h1 mm | h4 mm | Q @ c=500mm kg | h2/ h5 mm | h1 mm | h4 mm | Q @ c=500mm kg | h2/ h5 mm | h1 mm | h4 mm | Q @ c=500mm kg |
| Simplex (Standaard) | 3000 | 150 | 2060 | 4135 | 3000 | 150 | 2220 | 4135 | 3500 | | | | |
| | 3300 | 150 | 2210 | 4435 | 3000 | 150 | 2320 | 4435 | 3500 | | | | |
| | 3700 | 150 | 2460 | 4835 | 3000 | 150 | 2640 | 4835 | 3500 | | | | |
| | 4000 | 150 | 2630 | 5135 | 3000 | 150 | 2770 | 5135 | 3500 | | | | |
| | 4500 | 150 | 2910 | 5635 | 2950 | 150 | 3020 | 5635 | 3400 | | | | |
| | 5000 | 150 | 3170 | 6135 | 2800 | 150 | 3270 | 5135 | 3300 | | | | |
| Duplex (extra vrije heffing) | 2950 | 930 | 2015 | 4080 | 3000 | | | | | | | | |
| | 3000 | | | | | 1135 | 2220 | 4135 | 3500 | | | | |
| | 3300 | 1125 | 2210 | 4435 | 3000 | 1235 | 2320 | 4435 | 3500 | | | | |
| | 3700 | 1375 | 2460 | 4835 | 3000 | 1555 | 2640 | 4835 | 3500 | | | | |
| | 4000 | 1545 | 2630 | 5135 | 3000 | 1385 | 2770 | 5135 | 3500 | | | | |
| Triplex | 3700 | 775 | 1860 | 4835 | 3000 | 880 | 1970 | 4835 | 3500 | | | | |
| | 4000 | 875 | 1960 | 5135 | 3000 | 980 | 2070 | 5135 | 3500 | | | | |
| | 4300 | 975 | 2060 | 5435 | 3000 | 1085 | 2175 | 5435 | 3500 | | | | |
| | 4700 | 1080 | 2165 | 5835 | 2900 | 1230 | 2320 | 5835 | 3400 | | | | |
| | 5000 | 1225 | 2310 | 6135 | 2800 | 1380 | 2470 | 6135 | 3300 | | | | |
| | 5500 | 1375 | 2460 | 6635 | 2700 | 1550 | 2640 | 6635 | 3200* | | | | |
| | 6000 | 1545 | 2630 | 7135 | 2600* | 1680 | 2770 | 7135 | 3100* | | | | |

* Capaciteiten zijn alleen met dubbele banden uitvoering.

Neem contact op met uw dealer voor informatie over de maximum toegestane tilt achterover met de daarbij behorende rest-capaciteit op hoogte.

Kapaciteit bij verschillende lastzwaartepunten



GDuSM0016(9/94)IdB
© 1994 MCFE
Printed in Switzerland

Presented by:



A. VOLLEBREGT B.V.

VERKOOP- VERHUUR VAN VORKHEFTRUCKS

Bleiswijk

Telefoon (010) 521 32 88 - Fax (010) 521 96 73

All illustrations and specifications contained in this literature are based on the latest product information available at the time of publication. The right is reserved to make changes at any time in colors, materials, equipment, specifications and models, and also in discontinuous models.