

CTC SERIE 90

3 WHEELS ELECTRONIC
FORKLIFT TRUCKS



A WHOLE RANGE FOR ANY REQUIREMENTS

CAPACITY: 600 - 800 - 1000 - 1200 - 1500 - 1700 KG

CTC Serie 90. A new generation of electronic forklift trucks studied to meet the requirements of the most exacting customers.

In fact all the components of the CTC series 90 trucks are specially designed and manufactured to allow the operator a long working shift without getting tired.

The exuberant power and the sweet running give great manoeuvring skill to the three wheels series trucks, above all in narrow

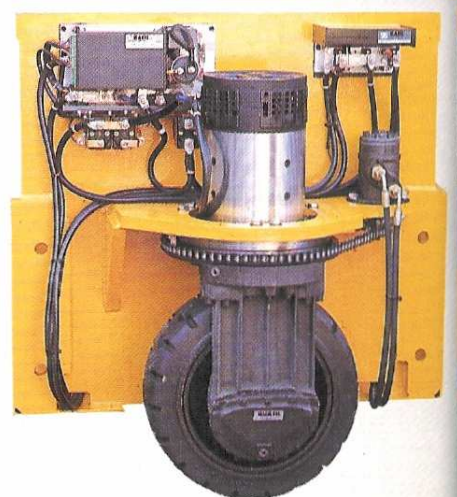
gangways, in restricted areas, on ramps and on lorries platforms.

The low decks, convenient for getting on and off on each side of the truck, the full side visibility from the operator's seat, the complete easy to check dashboard allow swift manoeuvring with full safety.

The lowered load centre and the great swinging of the driving axle give stability during any operation and increase the feeling of passive safety of the operator.

The complete standard equipments, the possibility to fit closed and warmed cabins, the full range of accessories and hydraulic and mechanical equipments allow CTC to supply the special truck for any kind of work.

Furthermore the CTC production flexibility allows the performing of special or personalized models, always complying with international safety rules.



The monolithic, strong and compact CHASSIS, the overall dimensions of the head guard that is lower than two meters, the reduced total width - 930 mm. for the 1803 Model - allow to run the truck inside the containers also with the standard model.

DRIVING PLACE as for cars, ergonomic type; it allows the operator to check easily all the controls. The wrap-around seat, available also with spring suspensions, the adjustable steering wheel, the soft and progressive steering, that is of hydraulic type with electronic control for the 48 V models, allow long

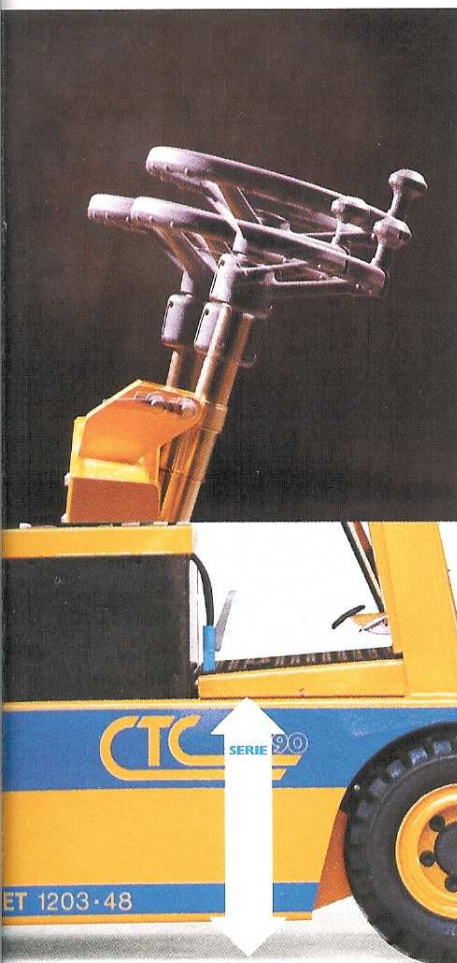
working shifts without tiring.

The MASTS with highly strength profiles, full visibility, duplex and triplex with free lift, make the truck ready for any type of handling operations. The built-in side shifter gives a high residual capacity with the same full visibility.

SCR ELECTRONICAL ADJUSTER: it controls the speed in a soft and progressive way to get soft speed reversals, operations in restricted areas, swift travelling on long displacements. Moreover it allows a greater exploitation of the battery capacity so in-

creasing the operating-range of the truck for every charging cycle. The new features of the system make possible the reverse current braking, so reducing the mechanical stress and the noise.

The **MAINTENANCE** is easy, due to the few check points. The full accessibility of the electronic and mechanical components allow short times of inspection for the routine and exceptional servicing. The low cost of the spare parts grants the full efficiency of the truck by the minimum management costs.



SERIE 90

3 WHEELS 48 V

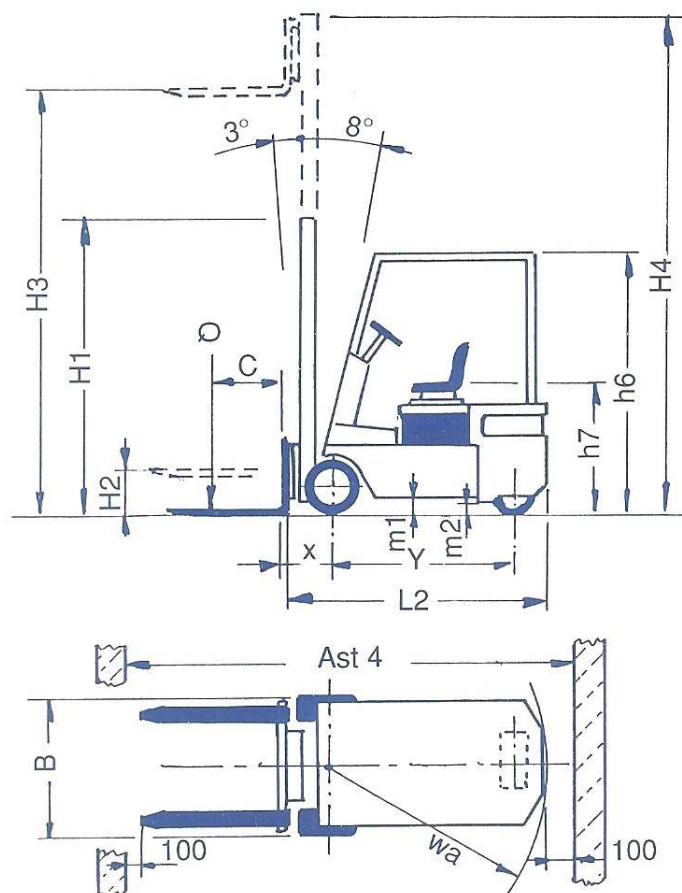
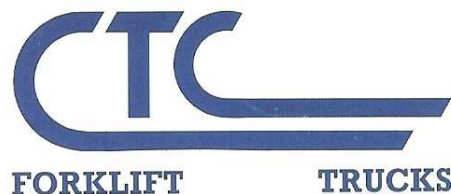


FEATURES										
1	Manufacturer				C.T.C.	C.T.C.	C.T.C.	C.T.C.		
2	Model				ET 1003-48	ET 1203-48	ET 1503-48	ET 1703-48		
3	Capacity	Q	Rated load	kg.	1.000	1.200	1.500	1.700		
4	Load centre	C	Distance	m/m.	500	500	500	500		
5	Power unit		Battery		Electric	Electric	Electric	Electric		
6	Driving		Operator		sitting	sitting	sitting	sitting		
7	Tyres		S=solid	C=Cushion	P.S.C./C.	P.S.C./C.	P.S.C./C.	P.S.C./C.		
			P=tube	front/rear						
8	Wheels (x=driving wheels)		Number	front/rear	2/1x	2/1x	2/1x	2/1x		
DIMENSIONS										
9	Telescopic DUPLEX mast	H3	Standard lifting	m/m.	3.300	3.300	3.300	3.300		
10		H2	Normal free lift	m/m.	100	100	100	100		
11		H5	Full free lift	m/m.	—	—	—	—		
12	Standard forks		Length/width/thickness	m/m.	1000x100x35	1000x100x35	1000x100x35	1000x100x35		
13	Forks carrier		Complying with FEM rules		FEM II	FEM II	FEM II	FEM II		
14	Tilting		Forward (α) backwards (β)		3/8	3/8	3/8	3/8		
Dimensions	15	L2	Overall length without forks		1.495	1.700	1.785	1.875		
	16	B	Overall width		m/m.	910	925	925	1.010	
	17	H1	Min.height with closed mast		m/m.	2.190	2.190	2.190	2.220	
	18	H4	Max height with raised mast		m/m.	3.840	3.840	3.840	3.870	
	19	h6	Height of headguard		m/m.	1.990	1.990	1.990	2.030	
	20	h7	Height of the seat		m/m.	980	980	980	1.010	
21	Turning radius		Wa	Outside	m/m.	1.250	1.400	1.490	1.490	
22	Load distance		x	From front wheel axle to forks		315	315	315	380	
23	Gangway width		Ast 4	Pallets 800x1200/1200x800		2.565-2.965	2.715-3.115	2.805-3.205	2.815-3.215	
Ast 4			Pallets 2000x2500/2500x2000		—	—	—	—		
PERFORMANCES										
25	Stability		According to rules		YES	YES	YES	YES		
Speed	26	Drive speed		With load	km/h	10	10	10	10	
	27	Drive speed		Without load	km/h	11	11	11	11	
	28	Lifting speed		With load	m/s	0,18	0,18	0,18	0,18	
	29	Lifting speed		Without load	m/s	0,26	0,26	0,26	0,26	
	30	Lowering speed		With load	m/s	0,60	0,60	0,60	0,60	
	31	Lowering speed		With load	m/s	0,40	0,40	0,40	0,40	
32	Traction power		With/without load		kg.	—	—	—	—	
33	Max. gradeability		With/without load		%	15/20	15/20	15/20	13/17	
WEIGHTS										
34	Weight with battery		Standard lifting		kg.	2.260	2.430	2.665	3.000	
35	Axle load laden		front/rear			2.790-470	2.900-730	3.545-620	4.115-585	
36	Axle load unladen		front/rear			980-1.280	1.075-1.355	1.075-1.590	1.285-1.715	
CHASSIS										
37	Wheels		Number		front/rear	2/1	2/1	2/1	2/1	
Front solid tyres				16x6/8	18x7/8	18x7/8	18x7/8			
Rear solid tyres				413x127x285	413x127x285	413x127x285	413x152x308			
40	Wheel base		Y	m/m.		970	1.170	1.230	1.230	
41	Track			m/m.		780	780	780	850	
42	Ground clearance		m1	Minimum		m/m.	55	55	55	105
m1			Centre		m/m.	90	90	90	105	
44	Brakes		Service brake			pedal	pedal	pedal	pedal	
Parking brake				hand	hand	hand	hand			
DRIVE UNIT										
46	Battery		Type			Tubular	Tubular	Tubular	Tubular	
Tension/capacity				48/210	48/315	48/400	48/375			
Minimum weight			kg.	500	700	820	820			
49	Electric motors		Driving		kw.	4,5	4,5	5	5,5	
Inter. lifting 30%			kw.	5,5	5,5	5,5	5,5			
51	Transmission		Type			Electron.var.	Electron.var.	Electron.var.	Electron.var.	
52	Hvdraulic svstem		Max. pressure		BAR	150	150	150	150	

For modifications and improvements, the above data are not binding

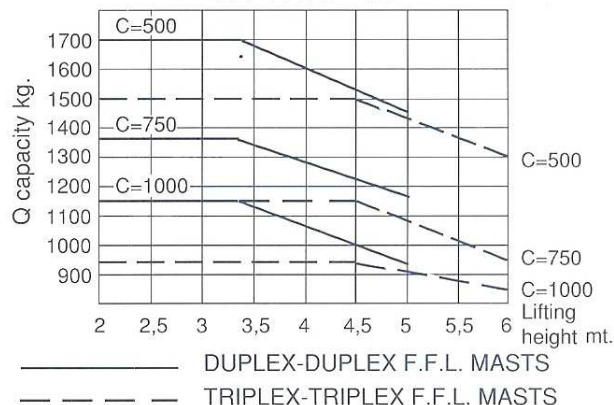
SERIE 90

3 WHEELS 48 V

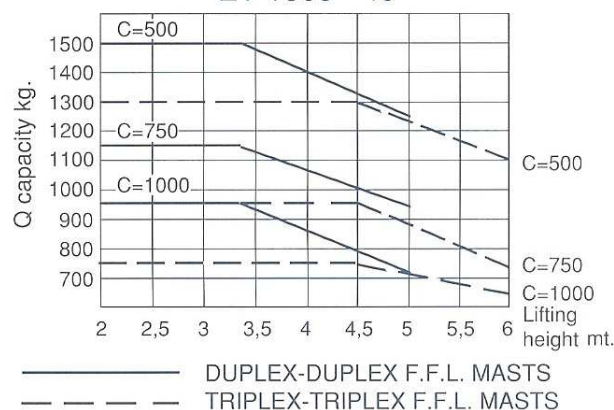


TYPE OF MAST	H3 lifting height	H1 minimum overall dimensions	H2 free lift	H4 maximum overall dimensions
DUPLEX	3.300	2.190	100	3.840
	3.600	2.380	100	4.215
	4.000	2.505	100	4.465
	4.500	2.810	100	5.080
	5.000	3.040	100	5.540
DUPLEX F.F.L.	2.900	1.960	1.400	3.450
	3.300	2.185	1.630	3.880
TRIPLEX	4.400	2.035	0	4.950
	5.200	2.300	0	5.720
	5.600	2.450	0	6.120
	6.000	2.600	0	6.250
TRIPLEX F.F.L.	4.400	1.960	1.400	4.905
	5.200	2.260	1.700	5.700
	5.600	2.405	1.850	6.105
	6.000	2.560	2.000	6.505

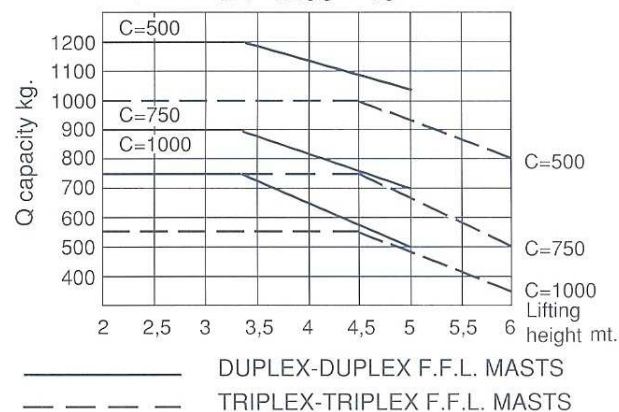
ET 1703 - 48



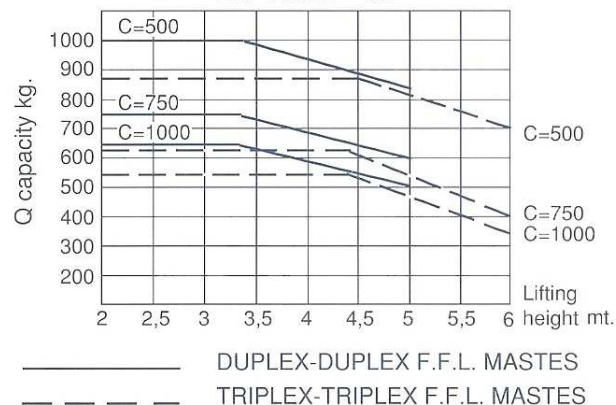
ET 1503 - 48



ET 1203 - 48



ET 1003 - 48



For modifications and improvements, the above data are not binding