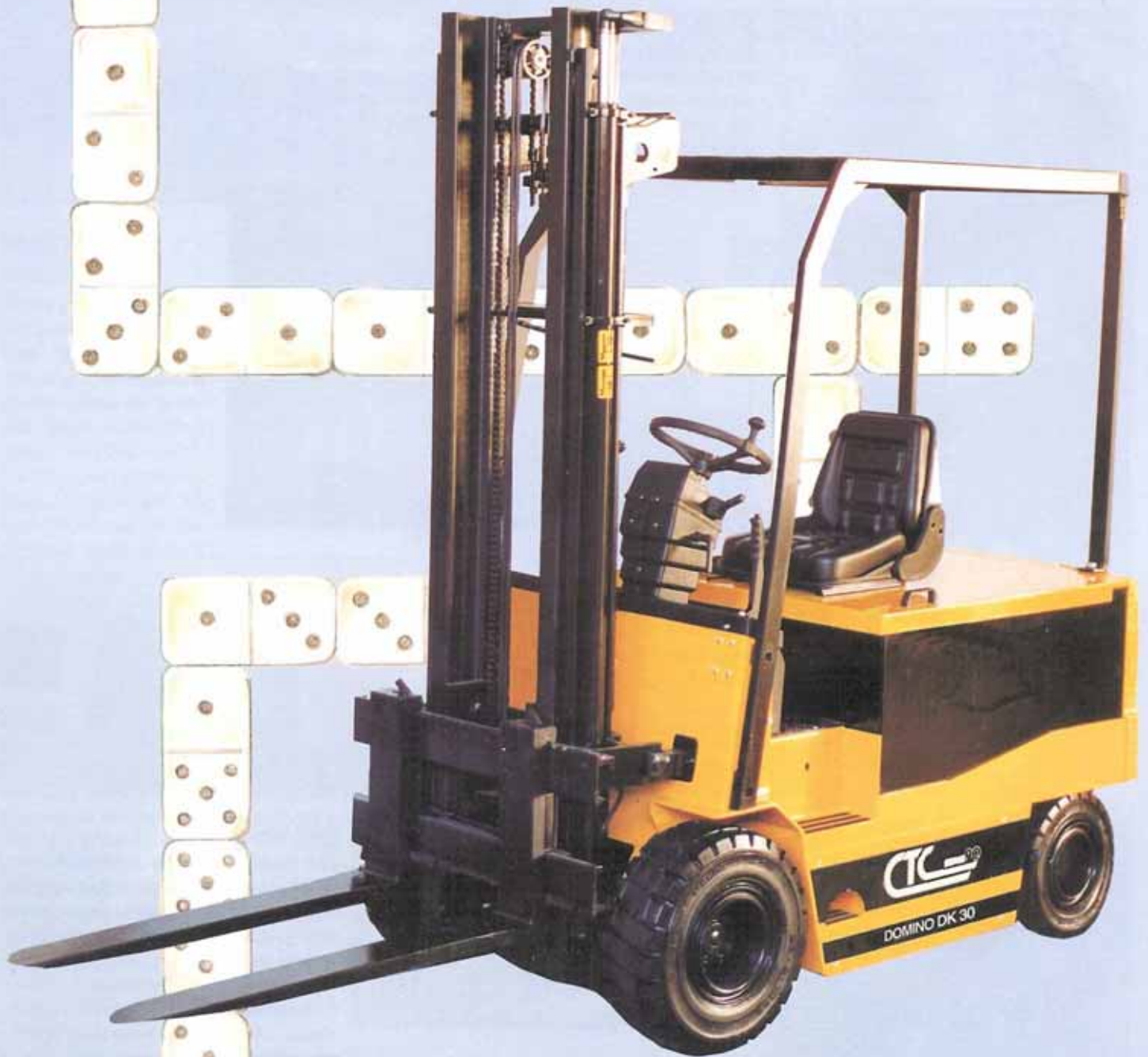


CTC DOMINO

CLASS

4 WHEELS ELECTRONIC
FORKLIFT TRUCKS

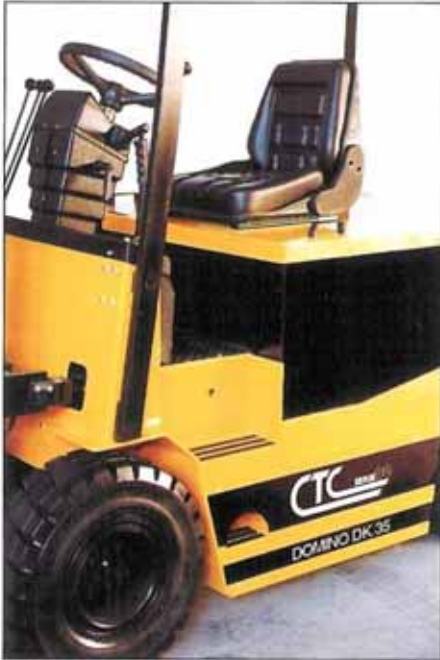


Dominating space

Models:	DK 25	-	DK 30	-	DK 35	-	DK40
Capacity kg:	2500		3000		3500		4000

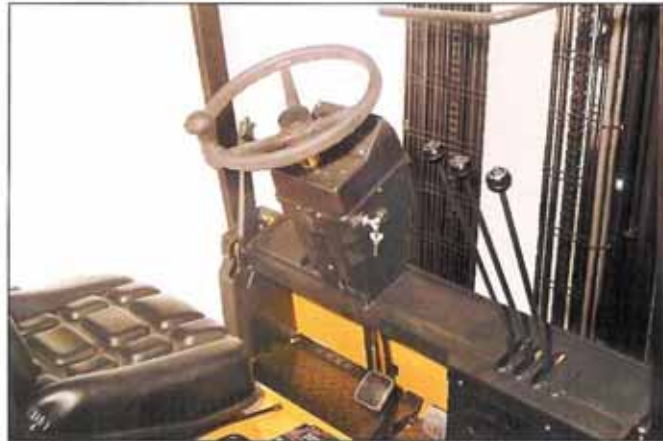
C.T.C. TRUCKS: HARD, HAND

It's a new electronic forklift truck model produced by C.T.C. with 2500/3000/3500/4000 Kg capacity, outcome of careful construction planning and the use of hi-tech components, to obtain the best working instruments for "hard to please" operators and difficult conditions. Strong structures, they're moved by 80 Volts D.C. motors and equipped with great capacity batteries.



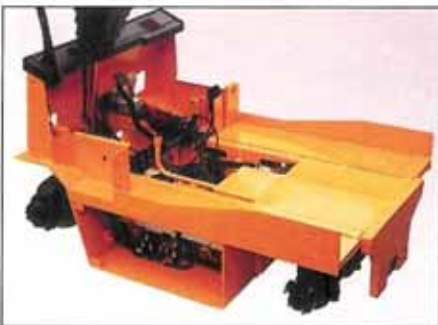
COMFORT

Wide antislip steps allow the operator easy and safe access to the drive position, made comfortable with adjustable hydrostatic steering column and sprung multi-position seat. All the levers to control hydraulic functions are set within reach of the relaxed right hand. The ample footboard gives free legs and foot movements, even with safety shoes.



HYDRAULIC STEERING

The "Orbitrol" steering system is under electronic control and allows safe and easy driving. The system works only when required, as a timer disconnects it when inactive, reducing consequently energy absorption and noise. The steering wheel can be adjusted in height and inclination adapting it to the driver's need.



CHASSIS

The battery location has been carefully studied to obtain the best ground load transfer distribution, giving stability to the truck even in the sharpest curves. The steel chassis at high torsional resistance assures great flexibility under stress.

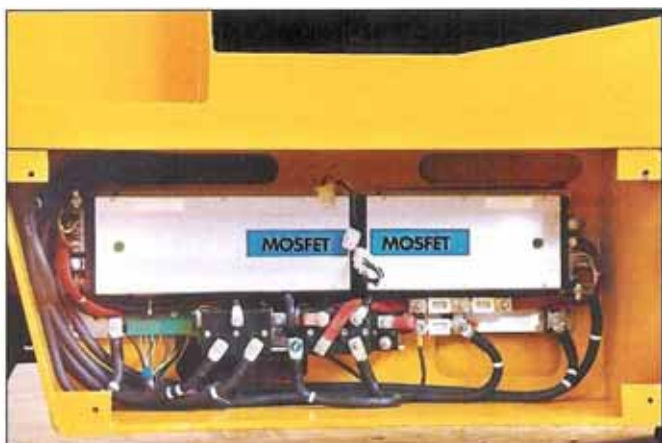


AXLES

The front drive axle, with differential and gear transmission, specially designed for this model, is coupled with a powerful motor to create a strong unit capable of great power reserve; also, it includes the hydraulic braking system with wide section shoes. The rear steering cock-shaft, manufactured in special steel using the modern and functional sandwich concept, is fitted on shock-absorbing rubber-bonded metal bushes, conforming the trim to the ground the truck is operating on. This peculiar configuration shields the other parts - such as hydraulic piston, forks, bearings and spindles - against casual blows or wrong maneuvers.



DIY AND HACKING OUTLAYS

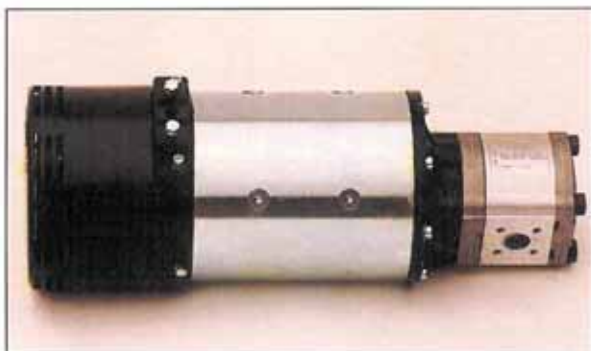


ELECTRONIC CONTROL SYSTEM

The electronic system, high frequency Mos, has been developed according to the latest technologies, adding response flexibility to energy saving. The microchip can also be programmed using an external diagnostic unit: the truck's functions are therefore adjustable according to the performances required. The current model offers electronic controlled hydraulic functions, steering and tilting, and includes braking energy saving system.

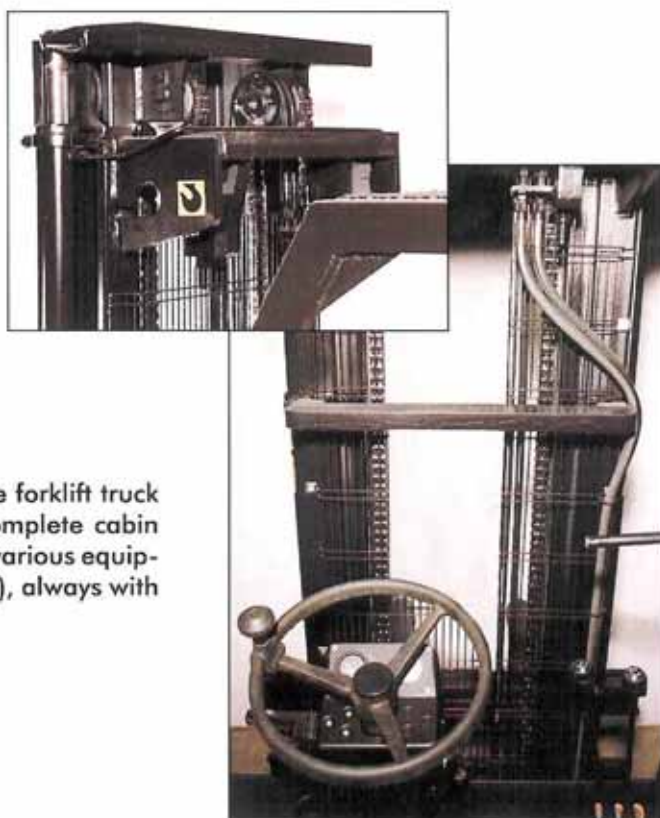
ELECTRIC MOTORS

Strong D.C. motors are used both for traction, hydraulics and steering: the available power gives as a result high operating speed and life, which means lower servicing costs. Models DK 35 and DK 40 use an additional independent pump-motor to provide feeding for hydraulic steering.



LIFTING MAST

Wide section cold-drawn profiles give exceptional strength and elasticity under stress. A bearings-rollers system assures smooth slipping of sliding guides and forks carrier. The hydraulic cylinders are placed on the profiles' sides to gain maximum visibility of load and forks. The cross members are located not to reduce visibility during "high-drawing" operations. The integrated side shifter gives a further help to increase working speed during both loading and unloading operations without reducing the truck's capacity.



SPECIAL EQUIPMENTS

Pneumatic, superelastic and cushion tires are available, and the forklift truck can be equipped with different batteries with water refiller, complete cabin with doors for outside winter use, working or road lights system, various equipments for special handlings (reels, coils, electric appliances, etc.), always with maximum comfort and operator's profit.

DK 25 - DK 30

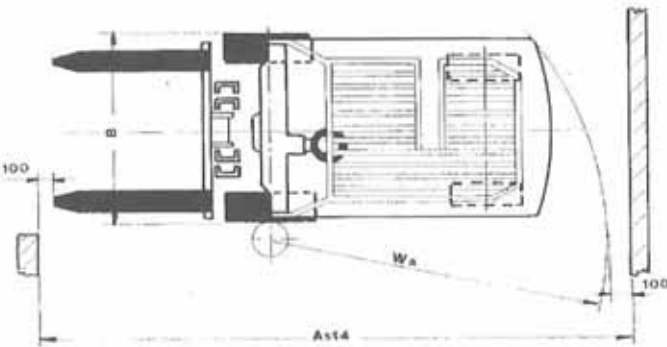
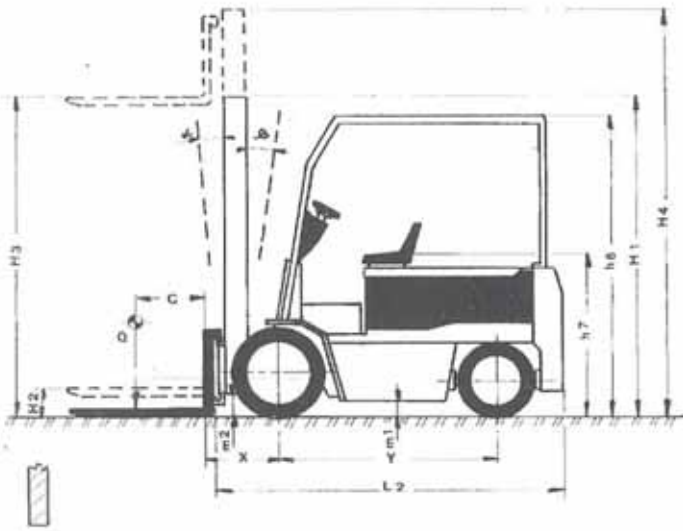
FEATURES, DIMENSIONS, PERFORMANCES

				DK 25	DK 30			
FEATURES	1	Manufacturer		CTC	CTC			
	2	Model		DK 25	DK 30			
	3	Capacity	Q	Rated load	kg	2500	3000	
	4	Load centre	c	Distance	mm	500	500	
	5	Motor type		Electric (Battery)	Electric	Electric		
	6	Driving position		Operator: standing - sitting - walking	sitting	sitting		
	7	Tyres		C=Cushion SE=Superelast. P=Pneumatic	P.S.C./S.	P.S.C./S.		
	8	Wheels (x=drive wheel)		Number front/rear	2x / 2	2x / 2		
DIMENSIONS	9	Lifting	h3	Standard lifting	mm	3300	3300	
	10	with	h2	Normal free lift	mm	140	140	
	11	duplex mast	h5	Full free lift	mm	-	-	
	12	Standard forks		Length(L) x Width(b) x Thickness(s)	mm	1000 x 130 x 40	1000 x 130 x 45	
	13	Forks carrier		FEM rules complying		FEM II A	FEM III A	
	14	Tilting		Forward (α) / Backwards (β)		3°/9°	3°/9°	
	15	Dimensions	L2	Overall length w/out forks	mm	2180	2260	
	16		B	Overall width (Twin tyres)	mm	1215	1215	
	17		h1	Min. height with closed mast	mm	2220	2220	
	18		h4	Max. height with raised mast	mm	3835	3835	
	19		h6	Height of headguard	mm	2280	2280	
	20	h7	Height of the seat	mm	1190	1190		
	21	Turning radius	Wa	Outer	mm	2300	2380	
	22	Load distance	x	From forks to front wheel axle	mm	415*	415*	
23	Gangway width	Ast.4	Pallets 800x1200 / 1200x1200	mm	3715/4115	3795/4195		
PERFORM.	24	Stability		FEM/ISO rules	YES	YES		
	25	Drive speed		With/without load	km/h	11/13	10,5/12,5	
	26	Lifting speed		With/without load	m/s	0,22/0,34	0,22/0,34	
	27	Lowering speed		With/without load	m/s	0,50/0,40	0,50/0,40	
	28	Max. towing capacity		Without load	kg	1100	1050	
	29	Max. gradeability		With/without load	%	14/17	13/16	
WEIGHTS	30	Weight with battery		Standard lifting	kg	4350	4650	
	31	Axle load-laden		Front/rear axle	kg	5800/1050	6650/1000	
		Axle load-unladen		Front/rear axle	kg	1730/2620	1750/2900	
CHASSIS	32			Number: front/rear	N.	2 x 2	2 x 2	
	33	Wheels		Size: front		23x9-10	23x9-10	
	34			Size: rear		18x7-8	18x7-8	
	35	Wheel base	Y		mm	1450	1450	
	36	Track		Front wheels centre	mm	995	995	
	37	Ground clearance	m2	Minimum	mm	125	125	
	38		m1	Wheel base centre	mm	125	125	
	39	Brakes			Pedal service brake		hydraulic	hydraulic
40			Hand parking brake		mechanic	mechanic		
DRIVE UNIT	41			Type		tubular	tubular	
	42	Battery			Tension/capacity	V/Ah	80/480	80/560
	43				Minimum weight	kg	1360	1540
	44	Electric motors			Traction, S2 power	kW	12	12
	45				Lifting, S3 25% power	kW	10	10
	46	Steering		Power type		-	-	
	47	Transmission		Power type		electron. var.	electron. var.	
	48	Hydraulic system		Max. pressure	bar	150	150	

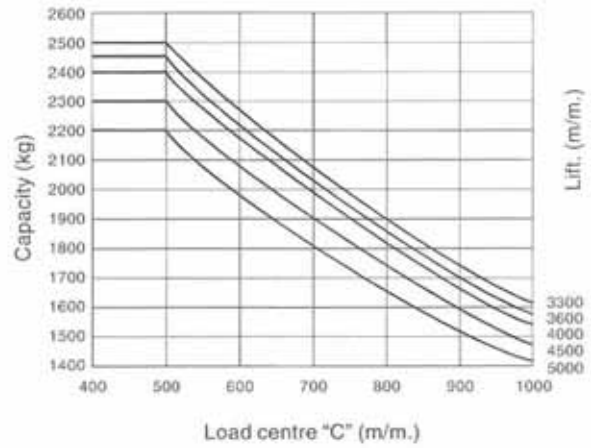
* with integrated side shifter = +40 mm

* with TRIPLEX mast = contact CTC

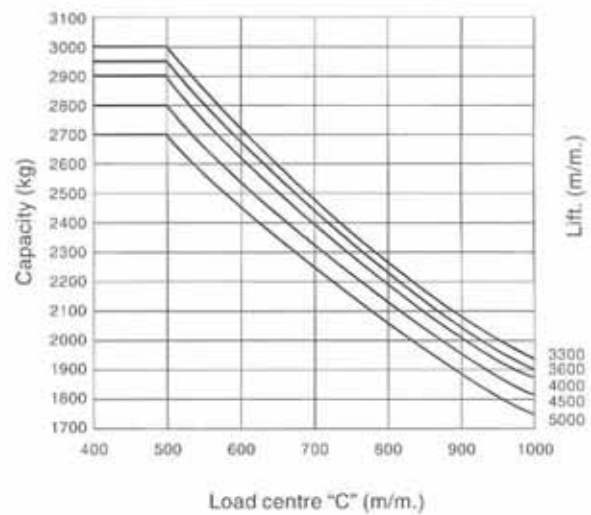
For modifications and improvements, the above data are not binding



DK 25
DUPLEX and DUPLEX F.F.L.



DK 30
DUPLEX and DUPLEX F.F.L.



Type of Mast	H3 Lifting Height	H1 Minimum overall dimension	H2 Free Lift	H4 Maximum overall dimension
DUPLEX	3.300	2.220	140	3.835
	3.600	2.345	140	4.085
	4.000	2.535	140	4.460
	4.500	2.785	140	4.960
	5.000	3.070	140	5.530
DUPLEX F.F.L.	2.900	1.985	1.390	3.485
	3.300	2.205	1.620	3.920
TRIPLEX F.F.L.	4.400	1.980	1.395	4.940
	5.200	2.280	1.695	5.740
	5.600	2.430	1.845	6.140
	6.000	2.580	1.995	6.540